

Summer 2013 Volume 28, Issue 1

## March "Mad"ness Skills Abound

### Inside this issue:

Regional Results	2
History Dept.	6
YWIH	9
Chorus articles	11
Quartet articles	17
Area Schools	19
Events Calendar	20



5 O'Clock Somewhere! wins the quartet competition with a score of 609.



The Woodlands Show Chorus wins its debut competition with a score of 663.

All contest photos courtesy of ER Lilley Photography

Region 10 Competition 2013

### Special points of interest:

- Wild Cards
- Hall of Fame recipient, Mary Ann Wydra
- The new "Pin Pal" program
- Young Women In Harmony
- Area Schools
- Calendar of Events

[Region 10 Chorus Results 2013](#)

[Region 10 Quartet Results 2013](#)

## Region 10 has TWO Wildcards!

With some of the highest scores from a quartet contest, Region 10 will proudly send 3 quartets to the 2013 International Quartet Contest in Honolulu, Hawaii in November. Along with **5 O'Clock Somewhere**, **SoundWise** and **Essence** will represent the region as Wildcards 2 and 10, respectively!



# SoundWise



# Essence

## More regional results



Visit

[Sweetadelineintl.org](http://Sweetadelineintl.org)

For more info on the  
Harmony Classic and  
Quartet Wildcards

### Alamo Metro is invited to Baltimore

The Alamo Metro Chorus, of San Antonio, has been invited to compete in the 2014 Harmony Classic, Division AA, held in Baltimore, Maryland. And

of course, they have accepted!

The Harmony Classic competition is held each year at the Sweet Adelines International Competition on Tuesday night.

The Harmony Classic, Division AA, is comprised of the five (5) first place Division AA (31-60 singing members) choruses or satellite choruses achieving the highest total scores in their respective category.

The Alamo Metro Chorus scored a 615 in the Great Gulf Coast Region 10 Regional Competition in March, 2013.

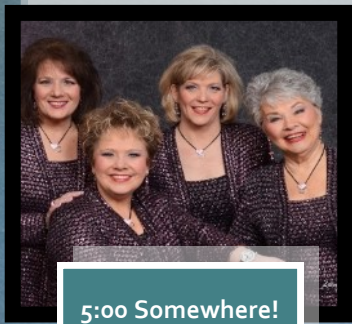
Congratulations, Alamo Metro!



**The Alamo Metro Chorus**



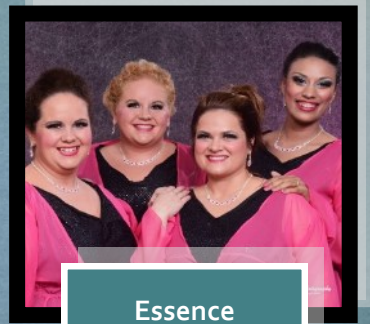
# Contest Top 5's



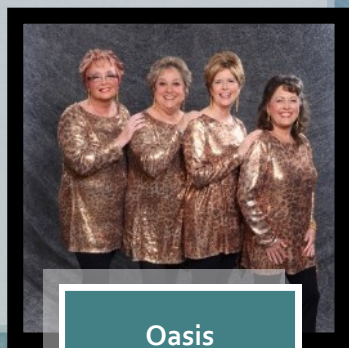
5:00 Somewhere!



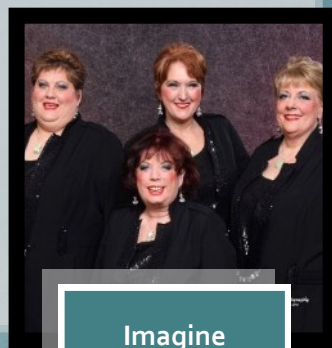
SoundWise



Essence



Oasis



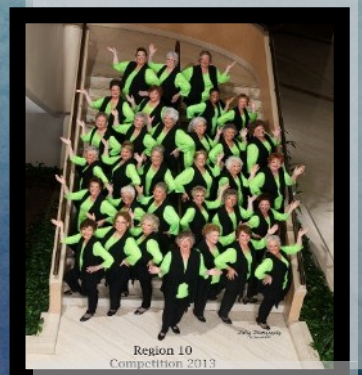
Imagine



The Woodlands Show Chorus



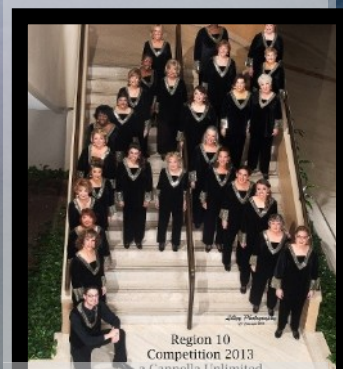
Alamo Metro Chorus



Texas Harmony Chorus



Chisholm Trail Chorus



A Cappella Unlimited

## Hall of Fame 2013: Mary Ann Wydra

At the age of 3, this pretty blonde headed girl sang on the local radio station, "Alice Blue Gown" from the musical "Irene". Her sister writes, "Music has been part of her life probably since the day she was born, and beyond. My sister was born for the stage. Of course, she sang in perfect pitch, and blasted out those high notes right on key. It was priceless. Our parents and all our relatives sang. We grew up with music all around us. She and I sang two-part harmony by the time I was four. When our other sister was six, we were singing three-part SSA music all around town in Pittsburgh. Even at a young age, she would direct us and kept us on our toes about singing everything on key. She had an amazing ear for music, and even though she had some years of training, her true gift was all natural." - Dee Binda

Mary Ann attended Penn University, but had a strong foot hold on most types of music before attending. Her passion for music drove her to the great harmonies of Barbershop style singing.

Mary Ann met her future husband at a bus stop. Their first date was at a ladies night at his annual barbershop chorus banquet. At the time, she was singing in the local community, but it was more chamber music & classical music. Of course, she sang tenor all night.

She quickly joined the local Sweet Adeline Golden Triangle chorus and soon became their director. As her daughter recalls, "Mom & Dad both rehearsed on Monday night so Nana & Papa would come look after us and spoil us, of course. They always watched the Lawrence Welk Show and for a while I had Jenny convinced that "the lovely Norma Zimmer" on the show was really Mom, because she had the same hair and they resembled each other. At first she didn't believe me, but I told her that's why Mom was always gone on Mondays, so she could be on TV" - Daughter Mel.

"I completely thought that Mom was on the show because she did look similar to Norma Zimmer and it made sense to me. Now that I'm thinking of it, I wonder why I never questioned why Dad wasn't on the show??" - Daughter Jen

Directing wasn't enough for our young Sweet Adeline. Quarteting was just one of the goals she had set for herself. With many Regional contests on her resume, it was just a matter of time before she hit the International stage. She received the coveted "Big Girl" medal by placing 4 and 5<sup>th</sup> at International with the **Crystal-Aires**.

One of the members of her Pittsburgh chorus remembers our recipient fondly. She looked up Sweet Adelines in the local yellow pages. The phone number rang to the director of the chorus, Mary Ann. She said to come to a rehearsal and explained where the rehearsal took place. She says, "I can still hear her giving her sales pitch. Little did I know that I would be in a quartet and competing with her on the regional

stage. We even had underwear that stated our quartet name on our panties." Imagine - "**Livin' End**" on their... well you know ...

Soon her husband's job moved them to Ohio. She had to leave her chorus behind but found the Western Reserve Chorus in a bedroom community near Cleveland. She, of course, was asked to be their Director and led this chorus to their very first small chorus win soon after arriving. She says that you would have thought they won International, they were so proud.

Her quartet stayed together. They would meet half way near Akron OH, at the Youngstown exit. In the beginning, they would meet at the toll gate parking lot and sing in a truck camper. That got old quickly so they ended up getting a hotel room off the highway. Her then tenor says, "We would mess up the bed so that the people at the hotel would talk about four women in one hotel room for a few hours. Many years later, in 1995, I moved to Austin and called her about possibly joining the chorus in San Antonio. I can still hear her on the phone

saying, 'you wouldn't think of going anywhere else, would you?' Needless, to say, she had not changed a single bit, still ready with the sales pitch. She was always arranging or rearranging music when I sang with her so it was not a huge surprise to see that she eventually had her name ending with the title of Certified Music Arranger. I knew her talents of music were far beyond most members. Therefore, the title of Certified Music Judge was destined." - Joyce Rankin

Life again moved the family to Dallas. She sang with the Richtone Chorus for many years and was an Associate Director with the great Dale Syverson. She sang with Dale at the Regional and International level in a quartet.

Dale says, "It's been my 'privilege' to finish her sentences for all the years I've known her. (Surely I'm not her only friend that does this...). Also, I've never known Mary Ann **NOT** to be singing a tune all day, every day. I got a full dose of this one time when we shared a hotel room when we were quarteting together. Lying in bed, the first thing she did when her eyes opened was sing. I'm not sure I ever really got used to it, but I do know that her music defines her and she would be lost without it." - Dale Syverson

Her husband's job moved the family to San Antonio in 1987. There were a few Sweet Adelines in the San Antonio area who were looking to form a new, more competitive SA Chorus. This charter member invited Mary Ann to meet with her in the spring of 1988 and asked if she would be interested in forming and directing a new group. June Deiser recalls, "She was open to being a part of a new chorus but not too keen on being the sole director. That was all that was needed to spur on to find someone to share directing responsibilities. *Voila!* Marcy Scofield instantly came to mind since she, too, was reluctant to be the sole Director and was already one of the founding members. They talked.... and the

*Continued on next page...*

Mary  
Ann  
Wydra





## "Direct"ly Speaking *by Sheri Strawther*



I hope all of you are having a great summer so far and enjoying your time with your choruses. I am very excited to announce our next Region Ten Director Seminar will be held May 2014 along with our Musical Leader's workshop. Sharon Babb will once again be our faculty and is already planning an incredible list of classes for you. More information will be coming soon!

Remember, all frontline directors going to the International Director Side by Side Workshop, make sure to keep your registration receipt for your chorus finance person to submit to the region for a \$300 reimbursement. I look forward to seeing many of you in California!

Here's an article by Paula Davis, International Board Member and Certified Expression Judge, on "Developing Stronger Choruses". Have a great summer everyone!

*Cont. from previous page:*

dynamic duo of M&M became a reality. Their first rehearsal was held April 21st and applied for our Charter six months later. Mary Ann has been directing solo for the past 13 years.

Alamo Metro history is quite impressive with Mary Ann at the helm: 9 Regional Championships, 10 appearances on the International stage (once as a Wildcard) placing in the Top Ten twice and once as 11th place Mic Testers. (Even a trip to Hawaii by Train.)

But that's not all:

Became a Certified Director 1988

Scored over 600 points in 1998 becoming a Master Director.

Became a Certified Arranger in 2004. Arranging has always been her passion. Ask any quartet singing at into the wee hours of the morning. She will rework your tag until dawn.

Qualified as a Music Judge in 1998 and then as Certified Music Judge in 2007.

She received her 50 year pin from President Renée Porzel in Denver 2012 but still has a life time of more achievements still ahead of her.

Generous with her talents, she has helped many a chorus and quartet reach and exceed their goals, by providing personal vocal instruction, coaching, and mentorship of the barbershop craft.

### What Does It Take to Be Successful?

- ◆ Assume responsibility for your own actions. If you are not successful, don't blame others. Take it on the chin and learn from it.
- ◆ Assume responsibility for your emotional reactions. It's not what happens to you that matters; it's what it means to you that determines your reaction. Stand back and get perspective. Ask yourself, "What can we learn from this?" or "Where do we go from here?" and it's easier to control your reactions.
- ◆ Identify the potential in each of your team members. Remember that people tend to live up to our expectations of them. Let your people know how terrific you think they are.
- ◆ Make an inventory of the resources at your disposal and use those resources to help your team perform better.
- ◆ Be optimistic. Optimism is contagious; so is pessimism. If your team is going to develop a positive, can-do attitude, you will need to set the tone.
- ◆ Develop a vision for your chorus. Define what the chorus will become – make it inspiring! This is particularly powerful when you develop your vision as a chorus.
- ◆ Set specific and measurable goals to make that vision come true. Include time frames and resource requirements.
- ◆ Treat others with empathy and respect – no matter what. Gain the independence, power and self-respect that come from doing the right thing, without regard to what others do.
- ◆ Think less about your own needs and more about the needs of your chorus/team. You will reap what you sow.
- ◆ Set an example – be a high performer. Work hard and smart. People will follow your example. Be honest with yourself and your chorus. Realize that eventually, those people will know you for who you are. Be open to constructive criticism and learn from it.
- ◆ Set a schedule for your own training and development – stick to it. Keep yourself growing and motivated. You're worth it.
- ◆ Good input = good output. Find and consistently use good sources of guidance and education.



Rappin' w/ Ronda

Nothing but Blue Skies

Well it appears that school's out and summer is upon us. I know the kids and teachers are happy for the break. With summer approaching, it means that another fun day of education and singing with our sisters in song is fast approaching.

I hope you have marked your calendar for June 29th and have been thinking about which area school you want to visit. Will it be Temple, Texas or Baton Rouge, Louisiana? Online registration is now available and is simply to let each host chorus know approximately how many will be coming, it's not required but helpful. If you decide to attend the day of, then please come on over. This event is included in your regional assessment and is FREE, so why not come and join the fun? Each area school chorus will have the opportunity to perform at the September 20-21, 2013 regional weekend.

We have great faculty at each school: Carol Scherer and Sheri Strawther in Temple and Vickie Dennis and Darlene Rogers in Baton Rouge. Be sure to see the flyers and additional information on the Region 10 website, <http://www.region10sai.org/>. The flyers contain directions, hotel possibilities, lunch information, and a schedule for the day. You can also find the sheet music and learning tracks for our new Regional song, *Blue Skies*, on the website. You will need this link, login and password for the music and tracks.

<http://www.region10sai.org/regionalsong-2013>  
User: regionalsong2013  
Password: Region!Blue2013

Also, we, as a Region, will not be singing the intro and will start at the chorus. Additionally, we have a new tag that is on a separate page. The learning tracks do not have the new tag but it is fairly simple and new tracks are being made. If your chorus would like to add this song to their repertoire please contact Holly Beck at RC music. The per copy for the region is \$2.00 and can be paid at the area schools or at the next regional event.

Continue to check the Regional calendar for future regional events and make your plans today. We have some great guest faculty coming up at future meetings. I look forward to seeing you all soon.

In harmony, Ronda Perez  
Education Coordinator for the Great Gulf Coast Region



## Happy Members

by Carol Mouché, Membership Coordinator, Great Gulf Coast Region 10



New members bring a sense of hope and expectation when they join us on the risers each week. Every experience is a new one for them – because even if they were a member of another chorus, or a local choral group, they need to learn OUR culture. And every chorus has its own culture.

What? Our own 'culture?' But we're all Sweet Adelines....

Ah, yes, we are all members of the same international organization, but at the local level, we are all unique.

- Most chorus rehearsals start on time – but not all of them do.
- Most chorus members wear nametags each week – but not all of them do.
- Most members keep talking on the risers to a minimum – but not all.
- Most choruses have an attendance policy – but not all do.
- Most rehearsals last 3 hours each week –

- but some choruses only rehearse for 2.
- Most rehearsals start with physical and vocal warm-ups – but not all.
- Most choruses set up risers each week – but some don't have the space to do so.
- Most choruses produce an annual community show – but not all do.

See what I mean? And those are just the obvious differences. Then you start comparing choreography lessons, costume selections, director quirks, rehearsal halls, annual retreats, membership and costume dues, ways to qualify on music selections, who attends regional events and how often, whether the chorus has outlined its 5-year goals, and fundraising activities, and you quickly understand that each group of women who meet weekly for rehearsal and fellowship is truly unique.

Now, imagine back to when you first joined your chorus. As a Rookie, how did you know what songs to practice at home each week? Who taught you those first choreo moves? Did you have to find your own ride to regional events or

did someone invite you to carpool with them? What the heck did "voice-place" or "stack the risers" mean? Didn't anyone tell you that it wasn't cool to wear perfume to rehearsal? (which explains why your risermate sneezed all night last week.)

If your chorus doesn't have a Rookie Program in place, contact me at [Region10mem@aol.com](mailto:Region10mem@aol.com) and I'll pass along some tips from those who do.

You should always be ready for a new face at the door. You may hook her with the music, but she'll stay if she feels comfortable. Remember, this Sweet Adeline 'culture' is unique. Teach your Rookies our 'language.' (Down the tiles? All in ones? PVIs?) Show her by example why you love to sing in a chorus and you'll see her blossom as she grows in musical and personal confidence.

# THE PIN PAL PROGRAM

## Great Gulf Coast Region 10 "Pin Pals" Program (established 2013)

**Concept:** In the interest of learning more about our region's choruses and each other, each chorus will create/obtain lapel pins that their members will trade with other chorus members during regional events. The idea is to really meet the person you exchange with, so when you look at the pin several months after you receive it, you can tell someone "Becky gave this to me. She sings baritone in Harmony Blends Chorus." We also want to instill a sense of pride in your chorus.

### Details:

- Funding --There is no funding from the Region for this – each chorus is on its own creatively and financially.
- When -- Have the pins ready for your members to begin exchanging at Fall Regional [Sept 20-21, 2013]. (and every Regional meeting/contest thereafter)
- Amount -- Ideally, each chorus member should have at least (2) pins to exchange at each event. Smaller choruses, don't fret – fewer members/pins will make collecting yours more 'special.'
- Dimension – preferably no more than 1.5 inches in diameter.
- Shape – any shape within 1.5-inch limit
- Color – any color
- Design – something that represents YOUR chorus that you can use for several years. Ideas: geographic, food, culture, flower, bird, armadillo, bluebonnet, star, heart, roadrunner, beachball, fleur de lis, crawfish, pine tree, train, chili pepper, lasso, longhorn, shape of state, cotton, pecan, pelican. Note: the "pin" can be attached with magnet if preferred.

### Notes:

- This is a voluntary program. You chorus does not have to participate, but it sure would be fun if everyone did!
- Lapel pin does NOT have to have your chorus name or logo printed on it.
- Recommend do NOT put a year on it (so you can use it for awhile, especially if you purchase/make in quantity).
- Be creative. Encourage members to scout out local stores (purchase locally if you can). Someone can design or you can purchase "off the shelf." Consider holding a design contest to involve your members. Keep costs to your chorus as low as possible.
- If you make your own, be sure they are good quality materials so they will hold up.
- As a fundraiser for International in Baltimore, The Woodlands Show Chorus will be creating sashes/lanyards to display these pins. They will have a booth at the Fall 2013 meeting. If you have a specific "chorus color," let them know and they will try to have some available in that color for you. Contact Bobbie Groeschel directly at [bjgroes@sbcglobal.net](mailto:bjgroes@sbcglobal.net).

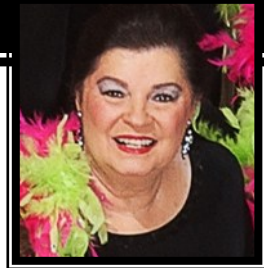
Questions about the program? Contact Membership Coordinator Carol Mouché at [Region10mem@aol.com](mailto:Region10mem@aol.com)

05/20/13

# 20th Annual Wall of Fame

Dona Dice-Alamo Metro  
Debbie Touchet-Austin Harmony  
Virginia Simoneaux-Baton Rouge  
Cortia Lindsey-Bayou Blend  
Julia Harrison-Brazos Crossing  
Vicki Davis-Chisholm Trail  
Charlene Cummings-Cradle of Texas  
Sandra Moise-Crescent City Sound  
Hazel Knipp-Fiesta City  
Becky Crawford-Heart of the Pines

Carin Williamson-Houston Horizon  
Bonnie Schuler-Lone Star  
Donna Struyk (posthumously)-Magic Valley  
Frances Arnett-Sparkling City  
Cindy King-Spirit of SETexas  
Peggy Eberwein-Texas Harmony  
Mary Smith-The Woodlands Show Chorus  
Debbie Warnke-Voice of Vermilion



## From the History Department

by Karen Bernard, Historian, Great Gulf Coast Region 10

Congratulations to winners of the 2012-2013 Scrapbook Contest: 1<sup>st</sup> - Sparkling City; 2<sup>nd</sup> - Alamo Metro; and 3<sup>rd</sup> - Chisholm Trail. I want to extend a sincere "thank you" to all of our chartered choruses that participated this year. Eighteen chartered choruses submitted entries on the 20<sup>th</sup> Annual Wall of Fame. They are named elsewhere in this issue.

It was wonderful to see everyone looking through all of the historical albums at our 52<sup>nd</sup> competition! Be sure to thumb through the chorus and quartet photos for sale in the Historian's Display at each regional function. Prices range from no cost at all to \$3.00. **PHOTOS NEEDED:** I'm still looking for pictures of Mission Belles from 1962 & 1964 and of Big "D" Chorus from 1963,

as well as numerous Small Chorus Winners between 1972 and 1978. It would be wonderful to have all of these pictures to complete the historical albums. All photos would be reproduced and returned safely.

Region 10 Chorus & Quartet historical albums and some scrapbooks are on display at most regional schools and at competition. Take some time to look at them and learn more about the 52-year history of our region. You'll be glad you did!

My contact information is as follows: Mailing address — 841 HWY 182; Sunset LA 70584. Phones: (h) 337-662-3247 and (fax) 337-662-2274. My email address is [kbsings@centurytel.net](mailto:kbsings@centurytel.net)

## DID YOU KNOW?

**Region 10 was one of only 3 regions to have ALL of our choruses vote in the election of the International Board of Directors! We got a "congrats" from SAI about it!**



Laugh

grow

sing

together

### Let's hear it for Region 10 Young Women In Harmony!

Our two-year reigning Regional YWIH Champions, Grace Notes, continue to impress. The quartet was recently featured in a performance with the Texas Children's Choir in San Antonio, Texas. Way to represent barbershop for all those young singers!

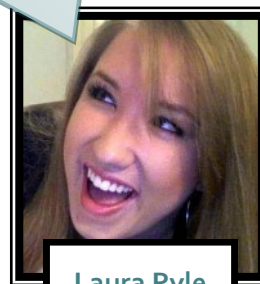
As announced earlier this year, there will be no Rising Star contest at the International Convention in Hawaii this Fall, but when it returns, it will be bigger and better than ever before. The Rising Star competition will resume in the summer of 2014 with many exciting and educational opportunities for the contestants! The plan is to house the contest within a YWIH festival each year, where the classes and clinicians will be tailoring the activities to our young singers. As an alumnus of the program, I cannot express just how elated I am by this decision from our International Board. Contestants will be immersed in a wonderful, educational barbershop experience, in addition to a shot at the International Rising Star Championship title.

That being said, it's time to look ahead and begin preparing for our very own regional YWIH contest. Entry forms and flyers for Region 10's 2014 YWIH Quartet Contest are available at the regional website NOW! It's never too soon to get started.

If you haven't already, please "Like" our page on Facebook to stay up to date with the latest photos, videos, and news of YWIH activity in the Great Gulf Coast Region 10. Let's make this year a great one!

Laura Pyle  
Your new Region10 YWIH Coordinator

YWIH



Laura Pyle



Grace Notes

[www.facebook.com/region10ywih](http://www.facebook.com/region10ywih)  
[region10ywih@gmail.com](mailto:region10ywih@gmail.com)  
[www.region10sai.org/ywih](http://www.region10sai.org/ywih)



# 2013-2014 Regional Management Team



Pictured l to r: Tammy Mathis, Cheryl Pyle, Marilyn Turner, Gail Eltgroth, Ronda Perez, Sheri Strawther, Carol Mouché, Karla Fenton

Communications Coordinator

**Karla Fenton**

Directors Coordinator

**Sheri Strawther**

Education Coordinator

**Ronda Perez**

Events Coordinator

**Marilyn Turner**

Finance Coordinator

**Cheryl Pyle**

Marketing Coordinator

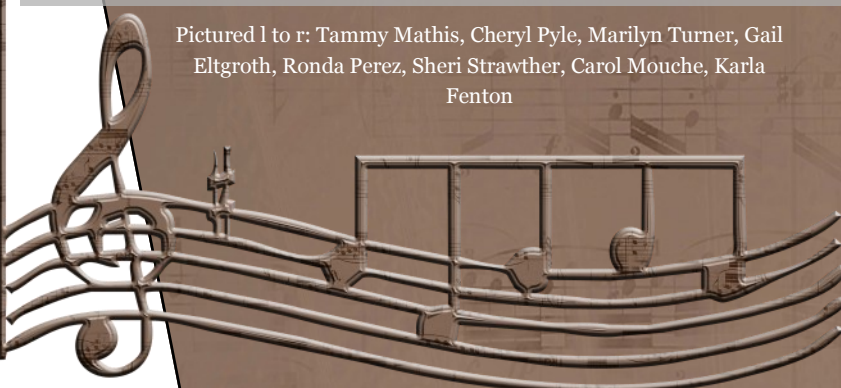
**Tammy Mathis**

Membership Coordinator

**Carol Mouché**

Team Coordinator

**Gail Eltgroth**



## Competition Changes Coming

**Competition Changes — Looking Ahead To 2014**

By Marcia Pinvidic, City of Gardens Chorus

As many of you know, the competition system for the 2013-2014 season is being revised. The changes are being implemented in the 2014 season. The changes are being implemented in the 2014 season. The changes are being implemented in the 2014 season.

The changes have been designed to give competitors more opportunity for success.

**NEW YWIF Video Chorus Contest**

Starting in 2014, the YWIF Video Chorus Contest will be a new addition to the competition system. The contest will be held in the 2014 season. The contest will be held in the 2014 season.

Changes to the competition system are in the works and on the way. To take a look at an outline of those changes, click the graphic to the left.

This article was published in the October 2012 issue of *The Pitch Pipe* and was written by Marcia Pinvidic, City of Gardens Chorus, Region 26.



## A Cappella Unlimited Chorus by Kathy Pillmore

Au is still coming off the high from March Regional competition. Taking home first and fifth place medals and a "First Place Small Chorus" trophy, and a "Most Improved" plaque, certificates and ribbons...well what more could one ask for. Each of our members will have an opportunity to take the traveling trophy home with them for a week and they have been challenged to take a photo of the trophy at an interesting location...a la, the traveling gnome. Watch our Facebook fan page to see where it turns up. [The Au Fan Page](#)

One can never rest too long, so the chorus is in preparation for a summer show entitled "Cruisin' with AuFM". As you might guess by the title, the show is patterned

after a radio broadcast (think Prairie Home Companion for barbershoppers) which will be re-broadcast for real at a later date. Another unique aspect of the show is the venue...Dick's Classic Garage in San Marcos. The garage is a museum for 65+ classic cars...including an original Tucker! The price of the show ticket includes a free tour of the museum. Guest quartets include (International Competitors!) **Essence and Spoiler Alert**. The date is June 22 and there are two shows; 3pm and 7pm. Tickets are available on our website...<http://acappellaunlimited.org>. Seating is limited so if you want to see a great barbershop show with a special bonus of some really cool cars...get your tickets early.

Just prior to competition this year, the chorus had a unique opportunity to get some training in contemporary a cappella. Through a special invitation from CASA (Contemporary A Cappella Society of America), we were able to participate in a day-long workshop where the Season 3 "Sing-Off" winning group, Delilah, was the guest coach and performer. Au and our director's high school a cappella group "Mixed Company" were lucky to have private coaching sessions with Delilah members and all enjoyed the showcase performances that capped off the day!

Au has had a couple other opportunities to show off their singing talents. The Wednesday

following contest we sang the National Anthem at a Spurs game. Shortly after that exciting experience, we sang for the Ambassadors Group at the San Marcos Chamber of Commerce.

We have a really busy year ahead of us but we're women and barbershoppers, so what new?



**Au & Mixed Company**



**AMC: Memorial Day**

Alamo Metro Chorus is very excited to announce that we have been invited to participate in the 2014 Harmony Classic contest to be held in Baltimore, Maryland!!! We are extremely proud to have the opportunity to represent our

## Alamo Metro Chorus by Lisa Deiser

region in what is a whole new contest for us. In addition, we are thrilled for our chorus quartets "Soundwise" and "Essence" who have both qualified as Wildcard contestants for the 2013 International Competition in Hawaii!!!! How exciting for Region 10 to have three quartets, as well as Houston Horizon Chorus representing us in this contest.

AMC has been quite busy since our last article. We recently held our annual Installation Dinner to welcome our new Management Team. It was a lovely

evening with much fun and merriment. In May, members of our Management Team and Music Staff attended the Chapter Leader's Workshop in Houston. As always, we came home with a ton of useful information and lots of great new ideas.

To continue an annual tradition, we once again participated in the Memorial Day Service at Fort Sam Houston Cemetery to honor our nation's veterans. This is very meaningful to us and we are humbled to be included in this special ceremony

every year. In addition to learning new music over the summer and preparing for our fall show, we are looking forward to holding several guest nights and are planning to participate in the "Bowling for Barbershop" campaign. We are also looking forward to one of our favorite social events, our annual Pool Party held at the home of our most gracious director, Mary Ann Wydra. Lots of food, singing and frivolity mixed in with an adult beverage or two makes for a fun time for all!

## Austin Harmony Chorus by Kathleen Leary

"Celebrate...Remember...Fight Back!"--Once again Austin Harmony was privileged to offer musical support to the annual American Cancer Society's Relay for Life on April 26. As always, the atmosphere reflected a spirit of reverence, resolve, and camaraderie.

The next day the chorus visited Dripping Springs as a part of the entertainment for the city's annual Founder's Day Festival. After the performance, we mingled among the unique booths and sampled tempting delicacies such as bacon-flavored lemonade. (Yum!?) Earlier in the year,

we enthusiastically welcomed two new members: Kim Stanley, a former member of Heart of Missouri, who recently transferred to Austin and D.J. Fronimos who commutes from San Antonio. Of course, we had another sensational time at contest. We especially loved enhancing this year's performance with sparkly new costumes and sassy choreo.

Toward the beginning of May, we held the Installation Ceremony of our new Management Team. With the generous assistance of Carol Mouché, three first-time officers were also introduced: Erica Hock-

ley (Finance), Linda Holt (Marketing), and Kathleen Leary (Communications.)

A new and insightful feature has been recently added to our rehearsals. Donna Seymour, our Membership Coordinator, had observed that because our attention is appropriately focused on Nancy, our director, as well as our music, there is not enough time for social interaction. As such, Donna is now sharing a brief bio of one member before the end of rehearsal--and we agree with Donna that: "We can sing better if we know each other better." Rounding out the spring, the Man-

agement Team attended the Regional Leadership workshop in Houston from which we hope that "Blue Skies" will shine on all of us. After performing for the delightful residents of Englewood Estates in June, our anticipation is building as we join our global sisters in preparing for the "Bowling for Barbershop" fundraiser in July.

We wish everyone a safe and fun-filled summer!



## Azalea City Harmony Chorus by Torri Necaïse

Even though it can be sad to say goodbye to friends you have known for years, change can be exciting! Our ladies are very excited to now be a part of Region 10. When we got the official word that Region 23 was dissolving, our Director, Pat Hegwood, and our Team Leader, Carole Hegwood, started making the road trip from Alabama across Mississippi and Louisiana, into Texas, to attend Region 10 events and get to know the members. We have already felt so welcomed into our new Region! We appreciate everything the RMT and others from the Region

have done to make this transition easier. Our chorus has already enjoyed a visit from Marsha Bock and Kate Sutton while they were vacationing at the Gulf. We also had a great visit from Sheri Strawther. Some of our members attended Regional Competition in Houston this past March. They had a great time and came back telling us what we can expect next year at contest. We received word this past week that Alamo Metro will serve as our sister Chorus. Our members who attended the May Leadership Workshop had a great time getting to know sev-

eral members from their chorus. Region 10 has opened its arms to our chorus in so many ways! Our chorus is very busy. We are learning some new songs and we'll be singing the National Anthem on May 31 at a Mobile Bay Bears baseball game. Several of our ladies plan to be in Baton Rouge on June 29. Our new Management Team and committees are working hard making plans for the new year. We're selling Tupperware, candles, coupon books, and candy bars to make money for new costumes to wear in our new Region!

We are all ready for the changes that have been made in our Sweet Adeline lives. We all have songs in our hearts and we're all eager to make some new friends!



Azalea City Harmony



Baton Rouge @ McDonalds

Baton Rouge Chorus! We found out at the regional meeting in May that we have been chartered longer than any other chorus in Region 10! And we are one of only two choruses that have never changed their name. Lots of history in our group and the future is bright!

Spring was filled with preparations for contest. We had a weekend

## Baton Rouge Chorus by Emily Wascome

retreat at The Rivers Retreat Center in Covington (our home away from home) and brought in the fabulous Sandi Wright as our coach. After all the hard work we put in on the contest songs, we let our hair down a bit with our version of the Gong Show on Saturday night. That theme was carried forth with a brief appearance of The Unknown Chorus, complete with paper bags!

We have selected and installed a new management team for the coming year. Congratulations to Jan Daly-Team Leader, Annette Douthat-Membership, Donna Robinson-Marketing/PR, Cindy Stevens-Financial, Tolly Thompson-Communications, and Cate McRitchie-

Music. They are the five fingers and palm that make up our guiding hand.

We were very sad to see the passing of one of our longtime members, Virginia Simoneaux. Virginia was our pick for Wall of Fame this year and had been a member of Baton Rouge Chorus for 32 years. Past and present chorus members were asked to sing How We Sang Today at her funeral service and it was a very touching and meaningful moment.

One of the fun performances we've done lately was the 50th anniversary of McDonald's of Baton Rouge. We were asked to sing some songs from the 60's and 70's followed by a few of the old McDonald's jingles. Ronald

McDonald stopped by for a photo op and we decided that he must use the same shade of Love That Red lipstick that we use!

New member, Irene LaRue, was sung in this May and she is a young'un! We appreciate all our members but really love that spark of youth and vitality when it comes along.

One of the Region 10 area schools on June 29th will be hosted by Baton Rouge Chorus and we are looking forward to seeing many of you there!

## Bayou Blend Chorus by Karen Bernard

"Greetings from Cajun Country and Bayou Blend Chorus! Several honors were bestowed on our members this spring. Did you visit the Wall of Fame boards at contest and read about our own Corla Lindsey? We are so proud of her accomplishments. Then, Susan Kinniff [for the 2<sup>nd</sup> year in a row] received our 2012-13 Attendance Award.

Installation of our 2013-14 Management Team gave everyone a chance to literally plant seeds for the new year. Kate Sutton, Team Coordinator; Marsha Bock, Financial Coordinator; Corla Lindsey, Music Services Coordinator; Marcelle LeBlanc, Membership Coordinator; Myra Tener, Communications Coordinator and Secretary; John "JP" Poirier, Chorus

Director; and Karen Bernard, Marketing/Public Relations Coordinator were all given packets of flowers for their home gardens. This clever ceremony was done by our "gardeners" Patricia Broussard and Catherine Sarwar, complete with implements and such.

JP's Music Team for the upcoming year includes Corla Lindsey, Assistant Director; Kate Sutton, Tenor Section Leader; Patricia Broussard, Baritone Section Leader; Marsha Bock, Lead Section Leader; and Lynda Fontenot,

Bass Section Leader.

The chorus had fun entertaining over 300 people at the Church Point Wholesale Annual Meeting in Crowley, Louisiana. The group wanted a patriotic package and we fulfilled their request with joy and love for our country. A bonus at that performance was the fantastic buffet afterwards. And who could forget volunteering at the fabulous Breaux Bridge Crawfish Festival in May. We are always treated to great music and amazing crawfish dishes at the many food booths. A gift of festival t-shirts to the workers is an added treat.



Alice Porter, Lynette Arceneaux, Lynda Fontenot

Bayou Blend is eagerly awaiting coaching this year from Darlene Rogers because preparation for our fall show is underway. **SAVE THIS DATE – SATURDAY, DECEMBER 7, 2013.** The name and details will be announced at a later date. It will be held at the Sliman Theater in New Iberia – site of previous Bayou Blend shows.

We are delighted that our own JP will be heading to California for the Side by Side Directors' Seminar. We know that he'll bring back lots of good things to us. Next up is the Baton Rouge Area School. Blue Skies await us and we are all looking forward to a day of singing, learning, seeing friends, and munching on good food prepared by our Baton Rouge sisters. Our own Bayou Blend pool party is scheduled this summer also so we're raring to go to both events! See you soon....



## Cradle of Texas Chorus by Jane Vaucher

Cradle of Texas has had a busy spring...singing at a major fundraiser for the Fort Bend Human Needs Ministry, as well as performances at Sienna Library and Fort Bend Friends and Neighbors Luncheon.

We are so delighted to welcome to the chorus our newest member, Lynn Asher - joining the bass section. She has a very long commute so her presence is all the more appreciated.

We all enjoyed attending Region Contest. Some of our members volunteered and appreciated all that goes on to make the contest

days run so smoothly.

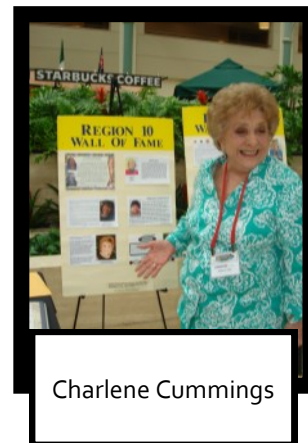
We were proud to honor Char Cummings as our well-deserved 2013 Wall of Famer! She is our longest standing member of 48 years with Sweet Adelines and contributes so much to our chorus in so many ways.

We had an enjoyable Installation of Chapter Officers and Hawaiian themed party at Jane's house. A big thank you to Karon Gresham for so capably conducting the elegant installation ceremony.

We are looking forward to perform-

ing the National Anthem on Flag Day, June 14th, at our Sugar Land Skeeters baseball stadium - should be a lot of fun so watch this space for a photo report to take you out to the Ball Game!

Our dual member with Houston Horizon, Bonnie Fisher, just performed in the very enjoyable Good Time Show - The Love Boat. We will be rooting for Bonnie and Houston Horizon and the Hawaiian bound Region 10 quartets - who are all sounding great, dressed and ready for Hawaii!



Charlene Cummings

## Chisholm Trail Chorus by Catherine Gowan

Chisholm Trail had a fabulous contest this year, earning third place mid-size and fourth place overall medals! We also improved by 24 points, which was thrilling after all the hours of rehearsal! (We snuck in a third place entry for the scrapbook, as well).

We're taking all the positive energy from contest and staying busy as the summer rolls around. We had a goal-setting meeting with Cheryl Pyle on April 11<sup>th</sup> and hashed out some ideas for the next five years-

more members, more performances, and more points! We installed our new Board of Directors in early May and they are ready to start moving forward on all the goals the chorus established. Liz Graves (President), Patti Ellisor (Vice President), Linda Goodenough (Historian), Shirley Holleman (Parliamentarian), Kaye Pledge (Recording Secretary), Nancy Birdsell (Corresponding Secretary), Jayme White (Treasurer), and Cat Gowan (Member-at-Large) have a busy year ahead of them! Many of our Board and

Music Staff members were able to attend Region 10's Leadership workshop May 17-18 in Houston. As usual, they brought back great information to share with the rest of the chorus.

The leads had a fantastic coaching session with Darlene Rogers on May 16<sup>th</sup> and worked on matching vowels and that ever-important "resonance". The Baritones will get their coaching session next!

Most importantly, we're hard at work planning the June 29<sup>th</sup> Area School! We're very excited to be hosting this regional event this summer and we hope everyone can make it to Temple, TX to join us!



Getting in the groove to sing "Aquarius" for the Chow of Champions 2013



Ladies Night Out

## Heart of the Pines Chorus by Lorna Laster

Heart of the Pines has been having lots of fun since contest. Nacogdoches had a "Ladies Night Out" at the Fredonia Hotel. We had a booth with brochures, business cards, pictures, and DVD from Int'l playing. We also got to perform two 15-minute segments during the evening. The theme was a nautical soiree thus, our navy stripes and sailor caps. There was food, drinks, shop-

ping...what a fun evening.

Two days later we performed on the Timbretones' (Nac. men's BHS) dinner/show along with Ringside, a men's comedy quartet who many of you probably know. It, too, was a fantastic evening.

Now we are preparing for the town's Blueberry Festival on June 8. We'll be up at the crack of dawn to provide music for the Blueberry Pancake line, then an actual performance at 9:00am on the stage at the Town Square. Afterwards, we'll be searching for an air conditioner.

## Houston Horizon Chorus by Becky Autry

Hello, Region 10! Now that Houston Horizon has caught our breath from Regional Competition, congratulations to **5 O'Clock Somewhere** and **The Woodlands Show Chorus**; you will do us proud! Congratulations also to **Soundwise** and **Essence** for being named wildcard competitors in Honolulu! Holy mackerel, we're going to have 3, count 'em 3, quartets representing our region...we're grinning ear to ear over this one!

The chorus is deep into prepara-

tion to represent you in Honolulu this November. We've started our quality assurance program and the visual improvement program is coming down the line at us. And oh, yes, we are still adding new members to the fold! We've had Sharon Babb in to coach and she will be back again at our Retreat. Rosemary Calderon has created and presented our choreography plan for the contest uptune and we're actually starting to remember most of it. And, last but not least, Joe Connelly is on the horizon

(pardon the pun!)

We recently installed our new Management Team, headed by Carin Williamson and Vickie Dennis, and are looking forward to their leadership throughout the year. Other team members include Becky Autry, Denise Dorriety, Marilyn Turner, Susanna Price, Carol Karna, and Sara Davis.

Hawaii, here we come....ALOHA!!!



## Magic Valley Chorus by Shirley Valentine

What a thrill it is for Magic Valley Chorus to be among the first recipients of the new membership award, Plus One Lapel Pin, not once but twice! Welcome to our two new Leads, Betsy Kozlowski and Eileen Amber, and congratulations to Joan Felton, who can now proudly wear a pin on each lapel. Way to go! We'll have to wait till fall to really show our appreciation, as both new members are among our Winter Texans and they departed for their Northern Nest a week after their successful auditions. We miss them and all our other friends who've gone their separate ways till late Fall.

However, we are diligently learning our new repertoire and our

LOAs stay connected via Live-streaming, learning along with us. Just because we are small in number for so many months does not stop us from singing and enjoying our barbershop music. We sang at a local garden center in April, enjoying the benefit of a beautiful outdoor setting. Later that month, we performed for a charming 80-year-old lady celebrating her birthday. Again, we sang in a lovely garden, surrounded by her friends and family. Our close-harmony was a new experience for many of the guests and they enjoyed hearing us. We were the "Icing on her Cake", or so we were told!

Recently we celebrated our newly elected Management Team with

dinner at Cracker Barrel, where we entertained by their delightful fireplace, pleasing many local residents with our unique harmony. Our resident Management Team Members all attended the recent Leadership Workshop. Everyone returned to rehearsal refreshed, enthusiastic, and ready to meet the challenges ahead. Beyond our expected learning rewards, we discovered wonderful people had come newly into Region 10. What a delight it was to work alongside these great ladies. We also enjoyed a joyful sound all weekend with a Men's Barbershop Event unfolding beside us. Their musical talent was an inspiration to all of us.

We regret that we will not be at Area School this year. Temple and Beaumont are just too far away for a one-day event. We loved being able to drive to Corpus Christi and San Antonio in years past, and hope locations closer to us will happen in the future. As our Region 10 boundaries have changed, we realize the challenges that face our Regional Management Team and commend their efforts. We thought they did an outstanding job at the Leadership Weekend.

We look forward to many more regional events as we adjust to changes in SAI, always remembering that our love of Barbershop Harmony is at the root of all we do.



## Piney Hills Chorus by Sally Rose Hollis



Elvis with Piney Hills Harmony

Piney Hills Harmony Chorus, based in Ruston, La., will stage a reprise of its well-received "Rock Around the Clock" show Aug. 24, first presented in January 2012. Performed as a benefit for Angel Ministries of Monroe, Elvis tribute artist Todd C. Martin will also perform at the event.

Both the chorus and "Elvis" will present songs from the '50s, '60s and '70s in a fun production that also features Lucy and Ethel from "I Love Lucy," the "Laugh In" joke wall and more. A quartet from within the chorus, Grace Notes, will also perform. Additional songs and

skits have been added to the previous program.

"Rock Around the Clock" will begin at 7 p.m. in the Jack Howard Theatre at the Monroe, LA. Civic Center. Tickets will be available June 15 through Ticketmaster or at the Civic Center box office. Prices are \$15 for adults and \$12 for children under 12 and seniors.

For more information call Carol Ogleat (318) 348-2291.

We'd love to see you at the show, and we're looking forward to getting to know everyone in this GREAT Great Gulf Coast Region 10!

## Southern Acappella Sound Chorus by Nancy Blackwell

**1 - a cappella; a capella; acappella, a Cappella**—whew! We chose to spell it ONE of the accepted ways, according to Webster's.... We know it is spelled differently in places all over Sweet Adelines throughout the world. We kinda thought it might be easier to help folks remember how to spell it by saying, think of a woman's anatomy: the "c" is the "head" and the "p's" are the breasts, and the "l's" are the "legs".... that MIGHT help folks remember (and we don't put a space between the "ah" and the cappella).

**2. On Friday, 04/19/2013,** SASC was privileged to have **RMT Membership Coordinator, Carol Mouché**, visit us in Monroe at Monjuni's Restaurant for a meet and greet on Friday evening. She then joined us on Saturday at our rehearsal location for a more in-depth day of learning and sharing. Carol shared valuable R10 facts and info about programs, policies, and procedures with the chorus, then answered questions and provided positive guidance for going forward. Thank you R10 for making this possible!

**3. Marketing Idea: Every Door Direct** – Last Fall, SASC did a mail-out, using the United States Postal Service's "Every Door Direct" service, to over 800 residences around our rehearsal location. We only had two visitors that we know of from that

mail out—but hey, two is two! They did not join, but we believe that perhaps the seed is planted. We are considering another mail-out to some of the small towns around Monroe in the future. If your chorus has never heard of this service, it works like this: at the USPS web site, you set up an account (free); you choose the exact postal routes where you want your flyer/letter/whatever delivered; it tells you exactly how many residences are on those routes; you can choose to spend what you want, depending on the routes you choose. You design your own document to be mailed out, control the costs and choose who receives your mail piece. Details at <https://www.usps.com/business/every-door-direct-mail.htm>

**4. Fundraising** – We had a great fundraiser with our "1200 Thread Count Bed Sheets" sales! June brides and graduations might be a good time to do one of these campaigns if your chorus needs a little more funding for a project. Our cost was \$17/set (which included shipping) and we sold them for \$35-40 each set. More information at: <http://www.sanderscollection.com/fundraising>

**5. R10 Leadership Workshop in Houston on May 17-18, 2013:** Only a bulleted list can accomplish sharing our experience and what we learned!

(Ask your leaders who attended for details about any of this, if you don't know what it means—you'll enjoy learning). We had a blast learning this weekend!

- Eat the LIVE frog first!
- Make your rehearsals engaging, musical and fun;
- Look the truth straight on and live your principles;
- Leaders need to know: "Everyone's 100% is not the same!"
- Stickers are fun! Stickers are motivational!
- Call people just to say, "hi."
- "Younger members" is referring to women in their 30's and 40's!
- Major changes for future competitions to be announced at Side-by-Side in July – make sure your director is there!
- Men's Harmony Brigade Extreme Quartetting – O-M-G! We just happened to be at the same hotel on the same weekend as this annual Brigade Rally! Wow. They invited us to attend the Saturday competition and, all I can say is: If you EVER get a chance to go watch this unique event, DO! More info online at <http://www.harmonybrigade.org/faq.php>

**6. Bowling for Barbershop:** Alright all you sweet R10 ladies, can you top our bowling? We challenge each and every chorus in R10 to get involved and BOWL for BARBERSHOP! Look us

up and give us a shout out! Southern Acappella Sound will be singing and slinging bowling balls!

**7. Kudos:** to our Singing Sisters of R25 who made us some absolutely beautiful, fantastic Scrapbook Pages: we appreciate this amazing, sweet, lovely, heartfelt effort! Thank, you each and every one!

**8. Sweet Adelines International Week** – We plan to get a PROCLAMATION signed by Monroe Mayor Jamie Mayo, designating a week in July as Sweet Adelines International week. Template at Int'l web site!

**9. Headed for Hawaii!** Five members of SASC are headed to Hawaii in November as dual members of Twin City Sensations, Texarkana, Texas's amazing chorus to be competing in HARMONY CLASSIC. Please join us as we wish the chorus and our members (Lillian Brown, Cherri Barmore, Mary Helen Tschabold, Monica Taylor and Candice Bassett) lots of luck!

**10. Harmonic Progression.** Finally, THANK YOU Sweet Adelines International, R25, and R10 for all the diligent work and heartache and foresight to accomplish the changes in regional structure. We FEEL the love and we LOVE each and every one of you right back! Until next tune-in time!....

## Sparkling City Chorus by Mary Hower

The Sparkling City Chorus began the contest season with a retreat on January 25-26 at Camp Zephyr on Lake Corpus Christi. We were delighted to have Janie Macchiaroli and Karla Fenton coordinate their chapter visit to be with us all week-end. On February 12, the chorus elected Frances Arnett as our Sweet Adeline of the Year. Frances is a long time member who gave us her all throughout the year and the recognition is well deserved. On Valentine's Day, five quartets canvassed the

city delivering over 40 singing Valentines. Also in February, the chorus welcomed new member, Sharon Queller, who worked hard to be able to sing at competition with us. Having contacts at Hooks stadium, Sharon urged chapter quartets to audition to sing the national anthem at Hooks baseball games. On April 4, **Imagine That** sang to a crowd of 6,000 for the season opener and **Just Jammin'** sang the anthem on May 3<sup>rd</sup>.

The chorus enjoyed unveiling new costumes for this years' contest and a brand new up-tune! We were thrilled to come home with third place small chorus medals! On May 10, we had a very successful rummage sale headed up by Barbara Behr. Currently, the chorus is getting ready for our "Sing 'n Sizzle" summer program where guests are invited to attend 6 weeks of barbershop instructions and perform with the chorus for the community the first week of August.

## Spirit of Southeast Texas Chorus by Debbie Keith



Cindy King

The Spirit of Southeast Texas Chorus would like to thank Cindy King for her many years of service as a member, co-director, and director of our chorus. Effective May 1, 2013, Cindy retired as director of our chorus and became an associate member. Thanks, Cindy, and we look forward to seeing you any time you want to visit.

In May, we installed the following Management Team members at the home of Margot Martinez in Port

Arthur: Operations-Darline LeJeune, Finance-Natalie Lockhart, Membership-Bettie Bibb, Marketing-Teresa Tuohy, Communications-Debbie Keith, and Special Projects-Sherilyn Goodman.

We also had a great time at our Links and Drinks fund-raiser in Port Arthur. The weather was dry and tolerable. Our location was in the Market Basket parking lot, across the street from a baseball field; a great location that attracted many visitors.

## The Woodlands Show Chorus by Kay Hammett

TWSC: Experiencing the JOY of SAI

TWSC is so honored and excited to represent Region 10 in Baltimore 2014, our first international contest! We are working hard and have a detailed plan to make you proud. Our coaches are lined up, our retreat is scheduled, and the music is in place.

Of course, in the true Betty Clipman style, we are working the basics at each rehearsal, while our music team is preparing each member by conducting workshops in breathing, vocal skills, performance . . . well, you get the picture. We are reciting "space, place, and face" in our sleep and loving every minute!

The two performances at the recent Woodlands Art Festival proved to be a blast, and we hope to see many region members at our upcoming 2013 performances. We sing July 3 at the Cynthia Woods Mitchell Pavilion before the Houston Symphony's annual Star Spangled Banner performance, and we have scheduled our holiday show for November 21 - details are still being determined, but go ahead and save the date. Believe it or not, we have performance dates in 2014 already scheduled!

As you can see, we haven't slowed down since Regional Contest, but it is because we all love the ride and share such joy in being a part of this wonderful SAI organization.





October

**Save the DATE**

**OCT 19**

for a show featuring



BEITEL MEMORIAL LUTHERAN CHURCH  
2515 AUSTIN HWY.  
SAN ANTONIO, TX 78216

5 O'CLOCK SOMEWHERE!

KEEP AN EYE ON YOUR EMAIL AND THE WEB FOR MORE INFORMATION!

# Opportunities for support



**HOUSTON HORIZON CHORUS**

<http://www.funpastafundraising.com/shop/houston-horizon-chorus>



**Raffle!**  
Get your ticket today!

**Acer Iconia A200 10G16U 10.1" Tablet**

1=\$1  
6=\$5



1=\$1  
6=\$5

Contact any quartet member for information and tickets:  
[sastrawther@msn.com](mailto:sastrawther@msn.com), [kbmauney@gmail.com](mailto:kbmauney@gmail.com),  
[c.hudler@cmaaccess.com](mailto:c.hudler@cmaaccess.com), [pparish@cmaaccess.com](mailto:pparish@cmaaccess.com)

Show your support for Essence!

**\$3.00 donation**



Contact any member of the quartet  
or visit them on Facebook

<https://www.facebook.com/EssenceQuartet>  
Email: [EssenceQuartet@gmail.com](mailto:EssenceQuartet@gmail.com)

To contact, click a name below:

[5 O'Clock Somewhere!](#)

[SoundWise](#)

[Essence](#)

[Houston Horizon](#)

### 5 O'Clock Somewhere! Carolyn, Kerri, Pam, & Sheri

5 O' Clock Somewhere is overjoyed to be representing Region 10 at International Convention in Hawaii in November. AND we are so happy to be sharing the stage with our sisters in harmony from Region 10, **SoundWise** and **Essence!**

As you can imagine, we are all busy trying to raise money and get our music to the highest level possible between now

and then. See the flyer about our raffle on page 16 in this newsletter.

We so appreciate your support at Regional Competition by giving us the Audience Choice award. There aren't adequate words to tell you how much that meant to us.

We would like to send a huge **THANK YOU** to the Winner's Circle for the 50/50 drawing funds,

with an extra shout out to Mary Hower for the generous gift of her half. What a beautiful gift from such a nice lady.

As you may or may not know, Kerri and Sheri are already in the Winner's Circle and have been for 25 years. Pam and Carolyn are in a state of ecstasy awaiting that round circle pin!!!!!!



The words you dream of hearing. That AWESOME moment.

### Bayou Breeze Charlene, Kathy, Lillian, & Laura



Greetings to our new Greater Gulf Coast Region 10 family. We are the Bayou Breeze Quartet and we are all members of the Southern Acappella Sound Chorus in Monroe, Louisiana. The members of the quartet are: Charlene Amorello (bass), Kathy Broadnax (tenor), Lillian Brown (lead), and Laura

Smith (baritone). We have been singing together as a quartet since 2007 and actually competed in regional competition in 2008 before our chorus had ever competed. We were pleased to have competed in the 2008, 2010, and 2011 Region 25 regional competitions and increased our score each

time. But more importantly, we have grown closer to each other and really love having fun and spreading harmony in our community. We are so happy to now be a part of the Region 10 family and we look forward to meeting some new friends and making beautiful harmony with you.

### Essence Caitlyn, Candice, Kerry, & Tianna

Aloha Region 10!

Essence is thrilled to announce that we are officially a wild card for International Competition in Hawaii!! We are still in a state of shock about this opportunity. We are especially excited that we will be competing alongside our friends, region champions **5 O'Clock Somewhere**, fellow wild card competitor, **SoundWise**, and the 2012 chorus champions **Houston Horizon Chorus**.

The outpouring of support and encouragement we continue to receive from the entire Region overwhelms us. Great Gulf Coast Region 10 is amazing and we are so blessed to be a part of this sisterhood in song. Our summer will be filled with preparations for Hawaii! We are also looking forward to singing on the A Cappella Unlimited Show later this month and can't wait to see everyone at Area School, too.



Essence Quartet

## Mix & Match *Rosemary, Marlene, Marci & Michelle*



Mix & Match performing



Mix and Match were feeling mighty proud and patriotic as we sang for 150 people at a Memorial Day Service at the community of Frisco Lakes. It was a very moving ceremony and it reminded all of us how fortunate we are to live in the land of the free and to be able to share the gift of our voices with others.

In addition, we've been busy learning new repertoire. Michelle has been with us exactly one year now and we are so happy to still be together and getting ready for the next contest. This includes selecting new music and lining up our coaching team for the coming year.

Contest was so much fun this year and improving 90 points last year and 52 points this year reassures us that we are on the right track! The most fun we had was visiting the hospitality rooms and singing for all of our Region 10 friends. Our new song, "DON JUAN" was especially well received with lots of fun and laughter. Mix and Match is ready with a fun show package if any choruses are looking for show quartets. We can deliver!

Good luck to 5 O'Clock Somewhere, SoundWise & Essence. You will represent us well in Hawaii!

## SoundWise *Melissa, Janet, Jane, Denise, & Ronda*

What could be better than singing with not three, but 11 of our barbershop friends in Hawaii? Well ... I can't think of TOO many things. What an honor it is to qualify as the 2nd Wildcard quartet contestant for the 2013 Sweet Adeline's quartet contest. We are overjoyed and SOOOO excited to join **5 O'clock Somewhere** and **Essence** on the international stage. Now the planning of rehearsals, new music, coaches, flights and registrations can begin.

Sometimes life throws us a curve. Melissa just started a new job last fall as an elementary music teacher. Then in April, our extra person at contest decided to be born early. "Mateo is his name Oh." He came into our lives April 18<sup>th</sup> and is a very

handsome baby with a GQ look, including his long locks of hair. (See photo). Well with these life events, Melissa will not be able to go to Hawaii with us. After considering some very talented ladies from our region, Janet Burnett, tenor of Oasis as agreed to be our substitute. As Janet says, "Costumes won't be a problem because Melissa and I are exactly the same size". Hmmm ...not exactly, but we are really thankful for Janet stepping in. Of course, Janet already had her tickets, as she is a member of Houston Horizon Chorus also competing in Hawaii.

Funds are tight - so it is show time. We have always wanted to do a show and

invite our friends to sing with us, so ... you're all invited.

October 19, 2013

Beitel Memorial Lutheran Church, 2515 Austin Hwy. San Antonio, TX 78218

Keep an eye out...More information to follow.

Honestly, we are so excited and so pleased that our scores in Region 10 have lifted us to this level. We so appreciate all your thoughts, prayers, and support. Hope to see you all in Temple or at the Fall Regional coming to you soon.

Love, Melissa, Janet, Jane, Denise, & Ronda



SW with Janet

How many are in your quartet?

Mateo is his name, O!





**Great Gulf Coast Region 10 Summer Area School**  
**"Nothin' But Blue Skies"**  
**Information sheet for Temple, TX, location**  
**Saturday, June 29, 2013**  
**9 a.m.-4 p.m. (doors open at 8:15 a.m.)**



**Event location**

Cultural Activities Center, 3011 North Third Street, Temple, Texas 76501 (easy on/off access to Interstate 35 on the north side of Temple). Details and map here: [www.cacarts.org](http://www.cacarts.org)

**Snacks**

Morning and afternoon snacks and bottled water will be provided. Closed drink containers only are allowed in the meeting halls; you are welcome to bring your own.



**Lunch**

We will be taking pre-orders (when you arrive) for box lunches from Jason's Deli at a reasonable cost to eat on-site. You are welcome to bring your own food & drink (in a small ice chest). Unfortunately, there are no restaurants/fast food chains nearby that can meet our time constraints if you choose to go off-site.

**Accommodations**

If you want to drive in Friday night and/or stay over Saturday, the City of Temple Tourism Departments offers a list of area hotels, details & online discounts: <http://www.ci.temple.tx.us/index.aspx?NID=418>

**Some recommendations**

**Candlewood Suites**

<http://tinyurl.com/cfu3tea>

**Fairfield Inn**

<http://www.marriott.com/hotels>

**Hilton Garden Inn**

[www.templegardeninn.com](http://www.templegardeninn.com)

**Holiday Inn Express**

<http://tinyurl.com/cy4gzug>

**Residence Inn by Marriott**

<http://tinyurl.com/7ickldg>

# Region 10 Area Schools

**Click on the graphic for a link to the information on the Regional website.**

**Trinity Lutheran Church: 10925 Florida Blvd.**

**FROM WEST:** Take I-10 across Mississippi R. and in to Baton Rouge

Bear left at 10-12 split to I-12

**FROM EAST:** Take I-12 into Baton Rouge

From either east or west,

**Exit on Sherwood Forest (Exit #4)**

Turn, north, onto Sherwood Forest

Turn left, west, on Florida Blvd., Hwy. 190

Immediately, get in the right-hand lane

Veer right onto the service road

Continue going west on service road a short distance

Turn right into Trinity Lutheran Church

**FROM SOUTH:**

Take I-10 West in to Baton Rouge

There are two main ways you can go.

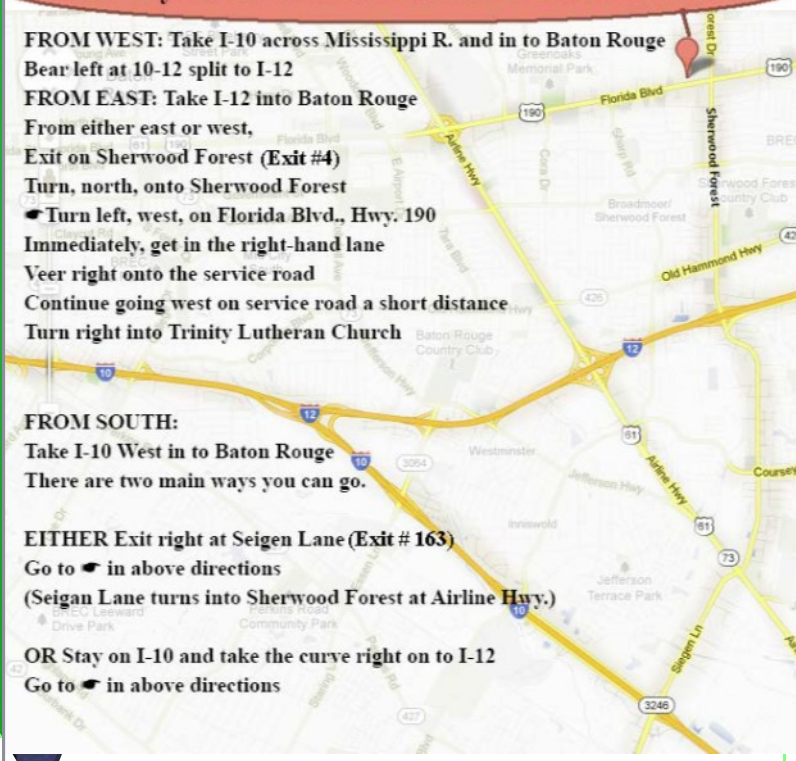
**EITHER Exit right at Seigan Lane (Exit # 163)**

Go to in above directions

(Seigan Lane turns into Sherwood Forest at Airline Hwy.)

**OR Stay on I-10 and take the curve right on to I-12**

Go to in above directions



Cappella  
**AU** unlimited

Invites you to come

## *Cruisin' with AuFM*

Award-winning women's  
A cappella barbershop  
chorus



Turn the Radio on and enjoy a journey to wonderful  
music from every location on the dial!

**Saturday,**

**June 22, 2013**

**Matinee: 3:00**

**Evening: 7:00**

**Venue: Dick's Classic Garage**  
120 Stagecoach,  
San Marcos, 78666



**PLUS: Every ticket includes a  
tour of the fabulous classic cars  
of Dick's Classic Garage,**

**So come early!**

**Featuring Award-winning Quartets:**

**Essence**

and

**Spoiler Alert**



**Matinee tickets: \$15.00**

**Group rates available**

**Evening tickets:**

**\$25 VIP Seating**

**\$20 General Admission**

**\$15 Seniors/Military/  
Students with ID**

Tickets available at the door or  
through PayPal at

[www.acappellaunlimited.org](http://www.acappellaunlimited.org)

or from any A Cappella Unlimited member

A Cappella Unlimited is a 501 (c) (3) non-profit chapter of Sweet Adelines International



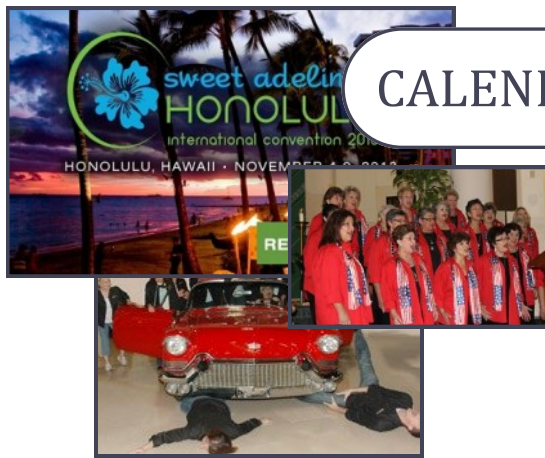
Great Gulf Coast  
Region 10  
Sweet Adelines  
International

**Region 10 Website:**  
<http://www.region10sai.org/>

*Great Gulf Coast Region 10 provides opportunities to women for education, performance, leadership, and personal growth to advance 4 part a cappella singing.*

The Music  
in Me

*Harmonize the World.  
Through Barbershop  
Song*



## CALENDAR OF EVENTS

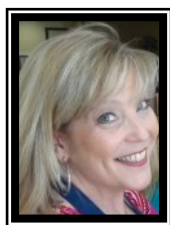
Check the Regional website for up to date information about upcoming events.

[Events Calendar](#)

### Region 10 Calendar

#### 2013

- 6/22—A Cappella Unlimited “Crusin” with AuFM” - 3 p.m. and 7 p.m.
- 6/29—Summer Area Schools—Baton Rouge, LA & Temple, TX—Regional Faculty
- 9/20-21—Fall Regional Meeting—Visual Focus—Houston, TX—Gail Jencik
- 10/12—Heart of the Pines Chorus—Fall Show
- 11/5-9—International Competition—Honolulu, HI
- 11/21—The Woodland Show Chorus—Holiday Show
- 12/7—Bayou Blend Chorus—Christmas Show



**Kerri Mauney —  
Editor,  
Tune in with Ten**

**17706 Placid Trails Dr.  
Tomball, TX 77377  
281-731-4518**

[kbmauney@gmail.com](mailto:kbmauney@gmail.com)

## Stay Connected with Region 10

All active and CAL members are encouraged to sign up for the Region 10 Yahoo e-group and/or our Facebook page. The e-group is our most timely method for disseminating information that is important to you—registration and flyers for area schools and contest, updated links on our regional website, this TIWT newsletter, and valuable information for your chorus leaders, directors, and quartets.

It's easy and free to join. Just send an email to [sa-region10-suscribe@yahoo.com](mailto:sa-region10-suscribe@yahoo.com) and we'll do the rest.

If you're on Facebook, find us under "Great Gulf Coast Region 10, Sweet Adelines International."

Note: We have converted from our former FB group — look for the comma in our name.

Join the discussion!

